

Core 4" Square Double Adjustable Downlight/Wall Wash

Formerly known as 1240AW-2MDL
Recessed Adjustable Multiple Aperture



The Core Family

When wall washing and accent/downlighting are needed in the same ceiling space, this 8" on center dual aperture fixture delivers a rich diversity of technical and aesthetic options including field configurable wall wash, adjustable accent light, over 14 finishes including custom wood trims, flux and source selections featuring 90+ CRI fixed white and our world class Ambient Dim (Warm Dim), and a plethora of driver and control choices. The Core Downlight/Wall Wash is created on a platform allowing a high degree of modification, so if you don't see what you are looking for, just ask for it.

PROJECT:

TYPE:

SPECIFIER:

DATE:

Key Points (CR4MDW-SMDL)

Trim

- Wall Wash trim and light engine can be field oriented at 90° increments to wash adjacent or oppsite walls
- Individual die cast aluminum or machined wood
- 14 color options + custom RAL or wood available
- Plaster Mount allows installation from below with large plaster flange and lip

Source / Optics

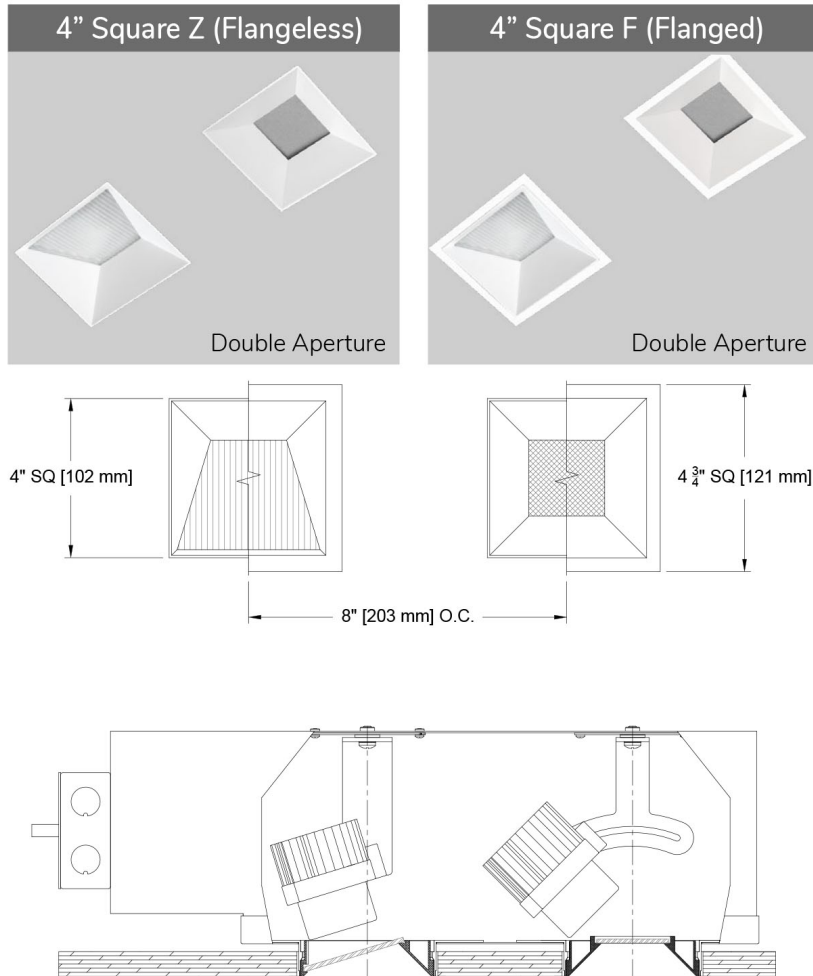
- Wall wash achieves a uniform 3.7:1 ratio from top to bottom of 10' wall
- Downlight/Accent adjustable with 45° tilt and 360° rotation
- Over 1900 lumens delivered in downlight and 1000 in wall wash with and C28 source selection
- <2 MacAdam Steps (<2SDCM) for fixed white
- 90 CRI , 60+ R9 Standard- 95 CRI 90+R9 Optional
- 2700, 3000, 3500, 4000K, Ambient Dim standard. Tunable White and RGBW upon request
- Lifetime: L87B3>55,000 hours at 40°C Ambient

Housing

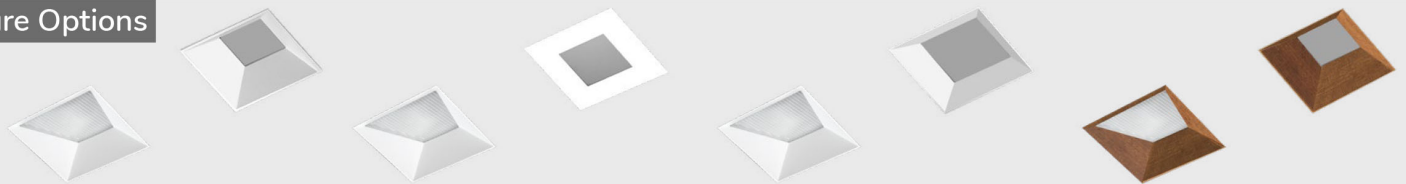
- 3 types of flangeless mounting options
- Heavy gauge aluminum for new construction or remodel
- IC Rated / Airtight Housing approved for use in direct contact with insulation – Chicago Plenum Available
- Approved for 8 (4-in / 4-out) #12 AWG conductors rated for 90°C through wiring
- Us Listed – Damp or wet with shower trim
- Compliant to with Airtight/IC Housing

Driver

- Dimming to 0.1% available
- Prewired and integral to housing
- Flicker free to IEEE 1789-2015
- Phase, 0-10, DALI, Ecosystem or Wireless Control
- Universal 120-277v



Aperture Options



Wall Wash | Deep Regress (DR)
2" Optical Aperture
Formerly known as 1240AW-2MDL

Wall Wash | Flat (pinhole) (FL)
2" Optical Aperture
Formerly known as 1240AW-2MDL

Wall Wash | Open Regress (OR)
2" Optical Aperture
Formerly known as 1240AW-2MDL

Wood Finish available with
All apertures options

SQUARE Beamspreads		15°				24°				40°				55°			
Source	System watts (W)	Delivered Lumens (lm)	Lumens/Watt	Peak cd	10% Field	Delivered Lumens (lm)	Lumens/Watt	Peak cd	10% Field	Delivered Lumens (lm)	Lumens/Watt	Peak cd	10% Field	Delivered Lumens (lm)	Lms/Watt	Peak cd	10% Field
Citizen C14	15	1068	71	7642	42°	995	66	4174	46°	1037	69	3429	51°	996	66	1402	71°
Citizen C20	21	1424	68	10190	40°	1326	63	5562	39°	1382	66	4570	55°	1328	63	1870	73°
Citizen C28*	30	1848	62	13223	44°	1857	62	7791	47°	1916	64	6336	54°	1816	61	2556	69°
Ambient Dim A14	15	694	46	6220	43°	656	44	3189	44°	656	44	1827	53°	643	43	1028	70°

Measurements are delivered or derived delivered lumens for accent/downlight part of fixture based on 3000k with Deep Regress. See photometric table below for other aperture types and wall wash part. Ambient dim at full output. C28 source requires active cooling and must be used with NIC housing.

Core 4" Square Double Adjustable Downlight/Wall Wash

Formerly known as 1240AW-2MDL
Recessed Adjustable Multiple Aperture



Ordering Codes

PROJECT:

SPECIFIER:

DATE:

TYPE:

QUANTITY:

Ordering Code Example: CR4DW-SMDL-FL-Z-AU-AWL-C20-35-15-LD-2C-P14-LR

FIXTURE	APERTURE	TRIM	MOUNTING	CONFIGURATIO N	SOURCE / WATTS	CCT	BEAM	DRIVER / CONTROL	CIRCUITS	TRIM FINISH	LENS ACCESSORIES	ACCESSORIES
CR4MDW-SMDL												
Core 4" Square Double Adjustable Downlight/Wall Wash	DR WW/DL-Deep Regress	F Flanged Trim	U Universal - Non IC	AWL Accent/Wall Wash Left	Citizen	27 2700K	15 Spot	C1 0-10 1.0%, UNV (120-277V) linear	1C 1 Circuit	W White Paint	Aperture Lens	CP Chicago Plenum
	OR WW/DL-Open Regress	Z Flangeless Trim	AU Universal IC/Airtight*	WAL Wall Wash Left/Accent	C14 15W 1068Lm* 90+CRI, 60+R9	30 3000K	24 Narrow Flood	C2 ELV/Triac 1.0%, (120V) linear	2C 2 Circuit	B Black Paint	91A Solite	EM Emergency Pack
	FL WW/DL-Flat (Pin Hole)	FS Flanged Shower Trim*	P Plaster - Non IC	Wall Wash can be field indexed in 90° increments	C20 21W 1424Lm* 90+CRI, 60+R9	35 3500K	40 Flood	EldoLED		D Wood*	XXA Other Aperture Lens Treatments*	Controls
	Note: Select for accent light aperture type	ZS Flangeless Shower Trim*	AP Plaster IC/Airtight*	Thumbnails shown as RCP	C28 30W† 1848Lm* 90+CRI, 60+R9	40 4000K	55 Wide Flood	E1 0-10 0.1%, UNV (120-277V) log		PXX Specialty Paint Color*	Reflector (lamp) Media	LR Lutron Wireless RF PowPak
			PM Panel Mount - Non IC		Ambient Dim	AD 3000-1900K	Note: Select for accent light aperture only	E2 DALI-2 0.1%, UNV (120-277V) log		P01-P15	93L Frosted	ATH Lutron Athena Wireless Node <i>Must be used with E2 driver</i>
			APM Panel Mount Airtight/IC*		A14 15W 694Lm* 95+CRI, 90+R9 3000 to 1900K			E3 0-10 0.1%, UNV (120-277V) linear		C Custom/RAL Color**	91L Solite	CA Casambi Wireless BLE to be paired with driver
			California Title 24 Compliant *Cannot be used with C28 source		Tunable White 90+CRI, 70+R9 1800-4000K or 2700-6500K^			Lutron		FINISH GUIDE LINK	97L Black Hexcel Louver	XXL Other reflector (lamp) media*
					RGBW 90+CRI, 60+R9 ^			LD Digital Ecosystem 1.0%, UNV (120-277V) ECO Hi-Lume SoftOn/Fade-to-Black LDE1		WOOD TRIM GUIDE	Selections for accent light only 1 piece of Media per opening (aperture or reflector) can be selected *Refer to Lens Guide	
					California Title 24 Compliant to JA8 for most downlight cells. † Requires Active Cooling and not compatible with IC/Airtight housing. Not compatible with L2 and LP drivers. *Based on single cell downlight & 15° beam. ^ Available upon request. Contact your regional sales manager.			LP Digital Ecosystem* 0.1%, UNV (120-277V) ECO Premier Hi-Lume SoftOn/Fade-to-Black, PEQ0, 20W max * Not compatible with C28		LENS ACCESSORY VISUAL GUIDE LINK		

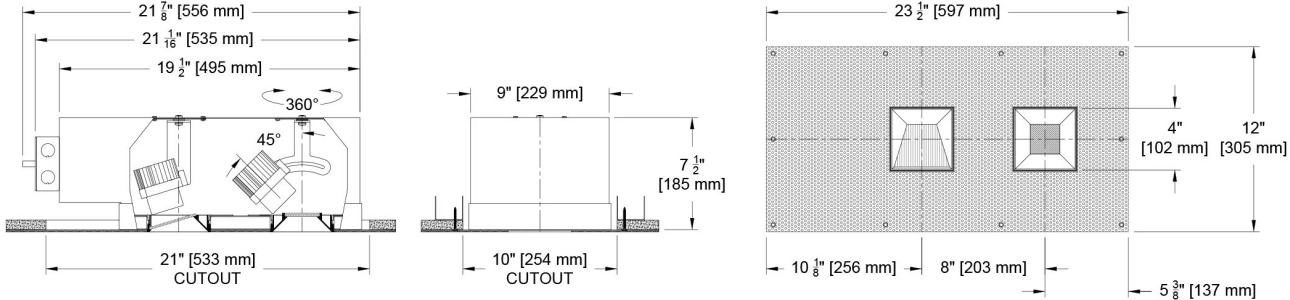
Ceiling Cutouts and Dimensions

Wall Wash trim and light engine can be configured, in the field, at 90° increments to wash adjacent or opposite walls. Downlight Deep Regress shown, other apertures similar.

4" Square Flangeless Housing

Plaster Mount (P/AP)

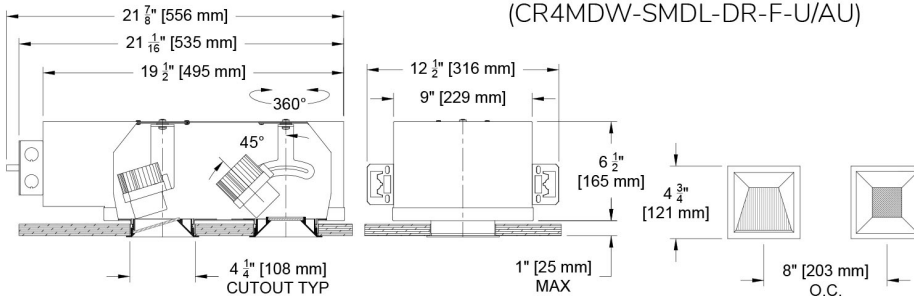
(CR4MDW-SMDL-DR-Z-P/AP)



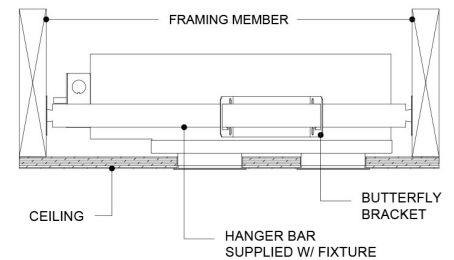
4" Square Flanged Housing

Flanged Mount (U/AU)

(CR4MDW-SMDL-DR-F-U/AU)



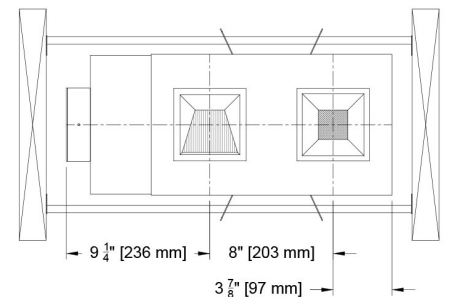
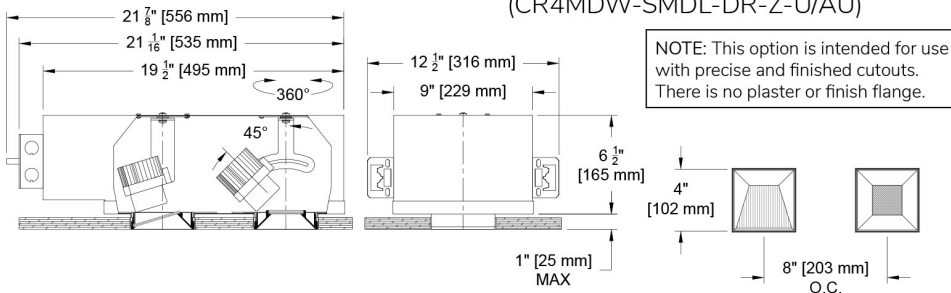
Hanger Bar Detail



4" Square Flangeless Housing

Flangeless Mount (U/AU)

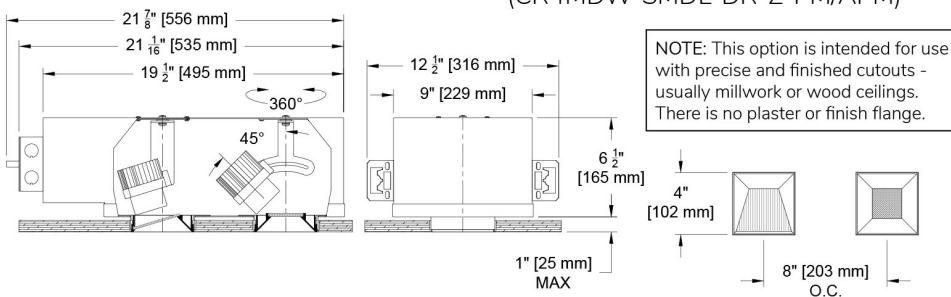
(CR4MDW-SMDL-DR-Z-U/AU)



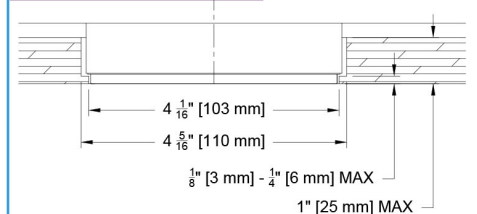
4" Square Flangeless Housing

Panel Mount (PM/APM)

(CR4MDW-SMDL-DR-Z-PM/APM)



Panel Mount Detail



Photometric Table

Values are based on single aperture fixtures. Calculations will require placing both downlight and wall wash elements (IES files) 8" on center in the desired orientation and configuration. All Measurements are delivered or derived delivered lumens at 3000k. Ambient dim at full output. All values can vary +/-10% from source manufacturer rated flux range.

SQUARE Beamspreads		15°					24°					40°					55°				
Source	System watts (W)	Delivered Lumens (lm)	Lumens/Watt	Peak cd	10% Field	Delivered Lumens (lm)	Lumens/Watt	Peak cd	10% Field	Delivered Lumens (lm)	Lumens/Watt	Peak cd	10% Field	Delivered Lumens (lm)	Lms/Watt	Peak cd	10% Field				
Deep Regress	Citizen C14	15	1068	71	7642	42°	995	66	4174	46°	1037	69	3429	51°	996	66	1402	71°			
	Citizen C20	21	1424	68	10190	40°	1326	63	5562	39°	1382	66	4570	55°	1328	63	1870	73°			
	Citizen C28*	30	1848	62	13223	44°	1857	62	7791	47°	1916	64	6336	54°	1816	61	2556	69°			
	Ambient Dim A14	15	694	46	6220	43°	656	44	3189	44°	656	44	1827	53°	643	43	1028	70°			
Open Regress	Citizen C14	15	1173	78	7776	42°	1091	73	4167	52°	1112	74	2422	66°	1058	71	1357	74°			
	Citizen C20	21	1564	74	10369	41°	1455	69	5559	57°	1482	71	3199	63°	1411	67	1810	76°			
	Citizen C28*	30	2158	72	14306	44°	2008	67	7669	55°	2045	68	4455	67°	1947	65	2496	72°			
	Ambient Dim A14	15	810	54	5857	39°	779	52	3270	56°	779	52	1829	60°	764	51	1058	72°			
Flat (Pin Hole)	Citizen C14	15	829	55	7740	37°	737	49	1436	46°	719	48	2379	51°	661	44	1357	64°			
	Citizen C20	21	1105	53	10321	35°	982	47	5513	42°	958	46	3169	49°	881	42	1808	62°			
	Citizen C28*	30	1525	51	14258	32°	1355	45	7604	44°	1322	44	4375	53°	1216	41	2496	59°			
	Ambient Dim A14	15	539	36	4828	36°	479	32	2326	42°	467	31	1301	50°	429	29	689	63°			

CCT Multiplier		
CCT	Citizen	
2700	0.95	
3000	1.00	
3500	1.02	
4000	1.03	

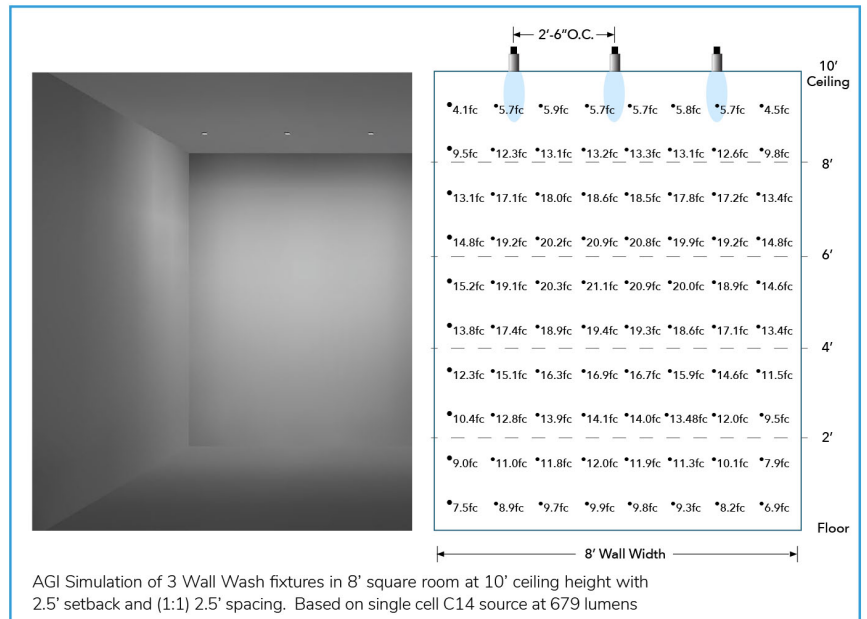
All measurements based on 3000 CCT.

ISO CD plots based on Open Regress. *C28 source requires active cooling and must be used with NIC housing. Flat (Pin Hole) at wider beam angles experience significant beam clipping - refer to PDF report for exact FWHM beam angle.

SQUARE Wall Wash (CR4WW-SF)			
Source	System watts (W)	Delivered Lumens (lm)	Lumens/Watt
Citizen C14	14	679	49
Citizen C20	21	832	40
Citizen C28*	30	1069	35
Ambient Dim A14	15	461	31

CCT Multiplier		
CCT	Citizen	
2700	0.95	
3000	1.00	
3500	1.02	
4000	1.03	

Values are based on a single head Core 4" square wall wash (CR4WW-SF).
*C28 requires active cooling and NIC housing



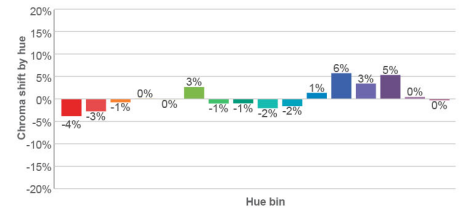
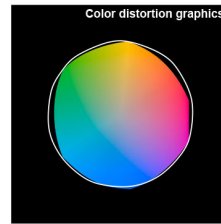
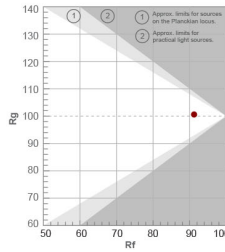
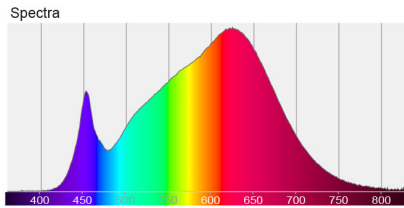
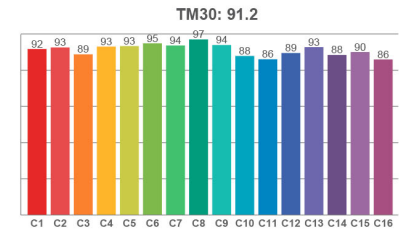
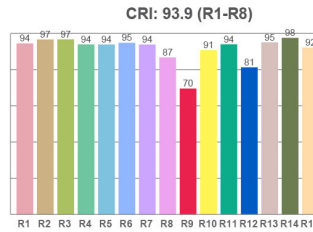
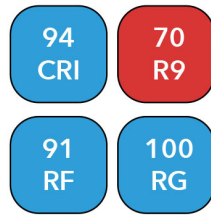
AGI Simulation of 3 Wall Wash fixtures in 8' square room at 10' ceiling height with 2.5' setback and (1:1) 2.5' spacing. Based on single cell C14 source at 679 lumens

Color Data

All data is based from goniometer measurements of production representative product. All lumen values can vary +/- 10% from LED manufacturer rated nominal flux. Measurements at 3000 CCT

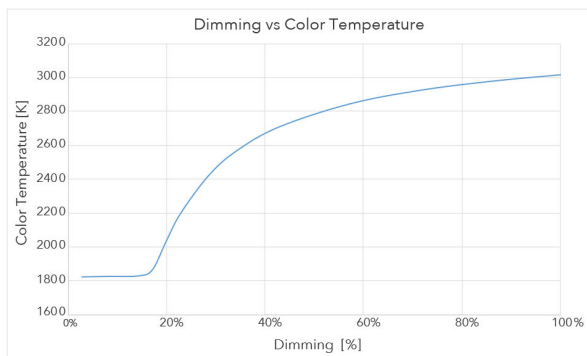
Citizen Sources for C14, 20 and C28

- <2 MacAdam Ellipse (<2 SDCM)
- 90+ CRI and RF
- 60+R9, Hue Bin 1

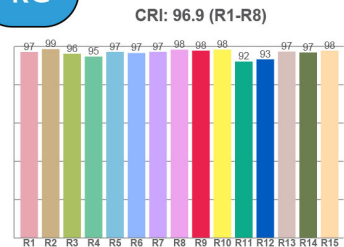
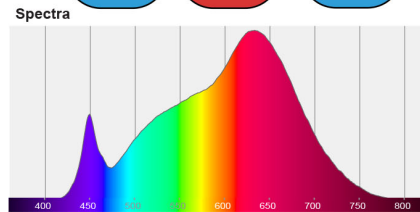


Ambient Dim 3000k to 1900k

- <3 MacAdam Ellipse (<3 SDCM)
- 95+ CRI and RF
- 90+R9, Hue Bin 1
- Follows Black Body Locus through dimming range



3000 CCT Full Output



1850 CCT 5% Output

